



Model: _____ Item #: _____ Date: _____

Project: _____ Qty: _____ Approved By: _____

Lighted Liquor Display

Royal Series Underbar



KR-2T24-L



KR-3T24-L

2-Tier Displays

| Model | Length | Depth | Power Cord Side | Bottles Stored | Weight (lbs.) |
|-----------|--------|-------|-----------------|----------------|---------------|
| KR-2T24-L | 24" | 9" | Left | 12 | 13 |
| KR-2T24-R | 24" | 9" | Right | 12 | 13 |
| KR-2T36-L | 36" | 9" | Left | 18 | 18 |
| KR-2T36-R | 36" | 9" | Right | 18 | 18 |
| KR-2T42-L | 42" | 9" | Left | 21 | 21 |
| KR-2T42-R | 42" | 9" | Right | 21 | 21 |
| KR-2T48-L | 48" | 9" | Left | 24 | 23 |
| KR-2T48-R | 48" | 9" | Right | 24 | 23 |
| KR-2T60-L | 60" | 9" | Left | 30 | 28 |
| KR-2T60-R | 60" | 9" | Right | 30 | 28 |
| KR-2T72-L | 72" | 9" | Left | 36 | 33 |
| KR-2T72-R | 72" | 9" | Right | 36 | 33 |

3-Tier Displays

| Model | Length | Depth | Power Cord Side | Bottles Stored | Weight (lbs.) |
|-----------|--------|-------|-----------------|----------------|---------------|
| KR-3T24-L | 24" | 13.5" | Left | 18 | 18 |
| KR-3T24-R | 24" | 13.5" | Right | 18 | 18 |
| KR-3T36-L | 36" | 13.5" | Left | 27 | 26 |
| KR-3T36-R | 36" | 13.5" | Right | 27 | 26 |
| KR-3T42-L | 42" | 13.5" | Left | 32 | 31 |
| KR-3T42-R | 42" | 13.5" | Right | 32 | 31 |
| KR-3T48-L | 48" | 13.5" | Left | 36 | 35 |
| KR-3T48-R | 48" | 13.5" | Right | 36 | 35 |
| KR-3T60-L | 60" | 13.5" | Left | 45 | 41 |
| KR-3T60-R | 60" | 13.5" | Right | 45 | 41 |
| KR-3T72-L | 72" | 13.5" | Left | 54 | 48 |
| KR-3T72-R | 72" | 13.5" | Right | 54 | 48 |

Description

Energy Efficient/12 Volt Tiered LED Liquor Display, spill resistant, each tier is 4" tall x 4.5" deep, **unlimited colors** with multiple motion effects. Includes (2) wireless remotes with batteries.

Standard Features

Construction Materials

- 100% Acrylic
- 1/4" Glossy Black front, sides, back
- 1/4" Double Frosted clear tops

LEDs

- RGB
- Chip: Epistar
- 60 LEDs/Meter
- Certifications: CE, RoHS
- Lifetime: 50,000 Hours

Output:

- Red: 1.98 LM/LED, Wavelength: 633nm
- Blue: 1.56 LM/LED, Wavelength: 462nm
- Green: 7.41 LM/LED, Wavelength: 521nm
- Viewing Angle - 120 Degrees

Power

- Power Draw: 14.4 watts/meter of LEDs
- Standard 2 Pronged plug
- 7' Long power cord

Power cord positioning is available on left or right side of the unit - Please specify when purchasing

Product Compliance

- UL Listed
- LEDs are CE & RoHS certified





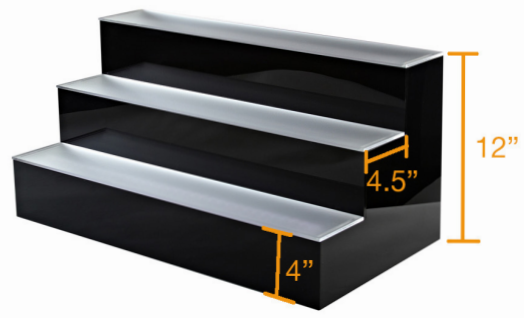
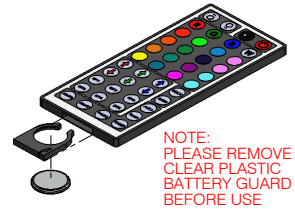
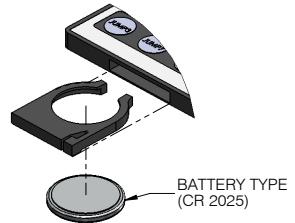
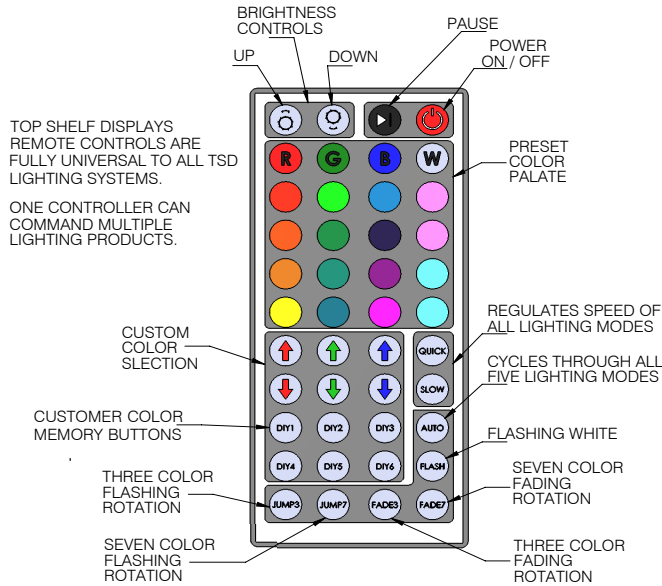
Model: _____ Item #: _____ Date: _____

Project: _____ Qty: _____ Approved By: _____

Lighted Liquor Display

Royal Series Underbar

Remote Control Button Guide



| Increase Brightness | Decrease Brightness | Pause/Run | On/Off |
|-----------------------|-----------------------|-----------------------|-----------------------|
| Static red | Static green | Static blue | Static white |
| Static orange | Static light green | Static dark blue | Static milk-white |
| Static dark yellow | Static cyan | Static royal purple | Static pink-white |
| Static yellow | Static light blue | Static purple | Static green-white |
| Static light yellow | Static sky blue | Static brown | Static blue-white |
| Increase red | Increase green | Increase blue | Speed up |
| Decrease red | Decrease green | Decrease blue | Speed-down |
| DIY key 1 | DIY key 2 | DIY key 3 | Automatic change |
| DIY key 4 | DIY key 5 | DIY key 6 | Flash on and off |
| 3 color "jump" change | 7 color "jump" change | 3 color "fade" change | 7 color "fade" change |