



Project Name: \_\_\_\_\_

Location: \_\_\_\_\_

Item #: \_\_\_\_\_

Qty: \_\_\_\_\_

# Grista Undercounter Freezer, 2 Door - 16 Cu Ft, 60"

## GRUCFZ-60



Ideal for establishments with limited floor space, the Grista 2 Door Undercounter Freezer keeps frozen ingredients easily accessible during food preparation. This undercounter freezer fits easily under existing countertops, optimizing space in your busy commercial kitchen. This commercial undercounter freezer is constructed of a durable 430 series stainless steel exterior and painted aluminum interior. The unit features two self-closing doors with recessed handles. This unit has a 14.2 cubic foot interior.

### FEATURES AND CONSTRUCTION

- 430 series stainless steel exterior and painted aluminum interior
- Two self-closing doors with recessed handles
- 14.2 cu ft of frozen storage
- Perfect for adding more frozen storage space anywhere you need it
- Flat stainless steel countertop can be used as a separate workstation
- 2 plastic coated wire shelves
- Precise digital temperature controller with LED display
- Temperature range of -8° to 0°
- Foamed-in-place polyurethane high-density cell insulation throughout the entire cabinet
- Automatic defrosting

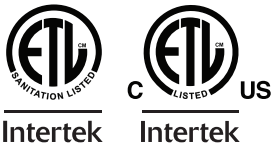
### ELECTRIC

115V / 60Hz / 1Ph  
Cord Length (Inches): 98.40"  
Plug Type: NEMA-5-15P  
Cord set included

NEMA 5-15P



### 3RD PARTY APPROVALS



### NOMINAL STORAGE CAPACITY

Cubic Feet: 15.7 cu. ft.

### TEMPERATURE

Holding Temperature (Fahrenheit): -8° - 0°

These models are designed to operate in an environment where temperature and humidity do not exceed 75°F (24°C) and 55% relative humidity

### WARRANTY (USA / CANADA)

2 Year Warranty on Parts & Labor, 5 Years on Compressor  
Contact Admiral Craft Equipment for details at 1-877-672-7740

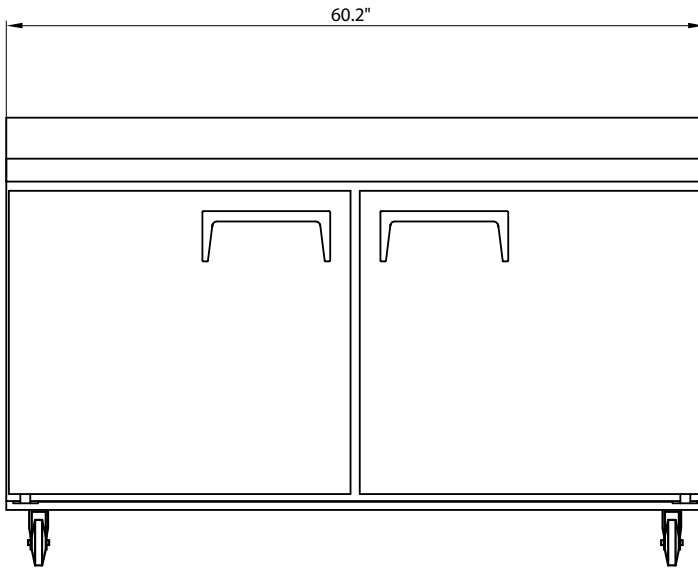




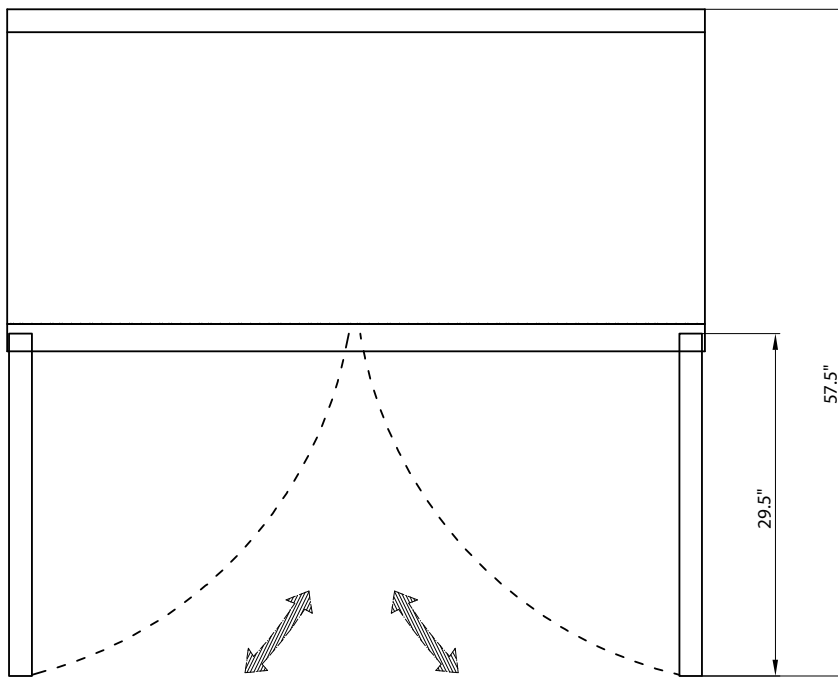
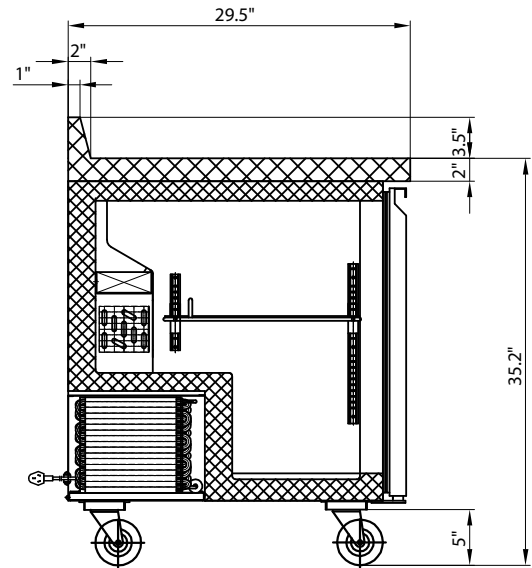
# Grista Undercounter Freezer, 2 Door - 16 Cu Ft, 60"

**GRUCFZ-60**

FRONT



SIDE



TOP

## Undercounter Freezers

Doors	Shelves	Amps	HP	Refrigerant	Dimensions	Item Weight lbs	Shipping Weight lbs
2	2	4.5A	0.5	R290	60.2" x 29.5" x 35.2"	253.0	323.0

Due to periodic changes in designs, methods, procedures, policies and regulations, the specifications contained in this document are subject to change without notice. While we exercise good faith efforts to provide information that is accurate, we are not responsible for errors or omissions in information provided or conclusions reached as a result of using the specifications. By using the information provided, the user assumes all risks in connection with such use.