



# SHADOW BOX 23"

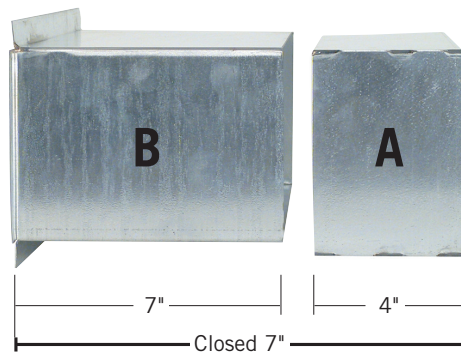
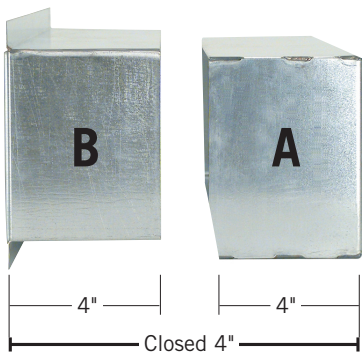
## THRU-THE-WALL INSTALLATIONS

- Use to ensure beer shanks share the walk-in cooler temperature
- Covered by wall mount drip tray on the front
- Galvanized construction, easy to punch shank holes through



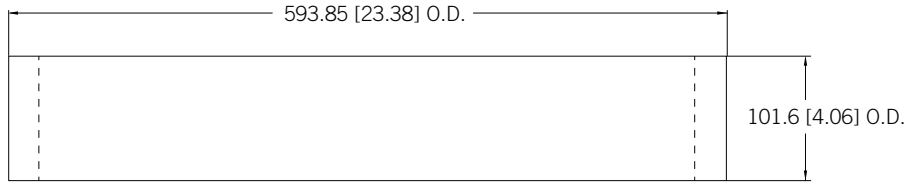
**SB492L**  
Long Sleeve

**SB492S**  
Short Sleeve

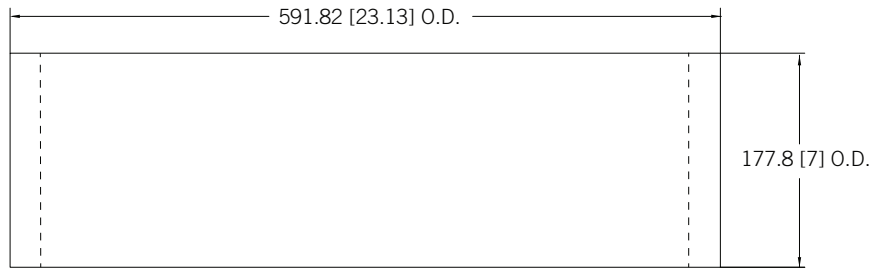


Part No.	Description	Sleeve	Length	Shipping Weight
☐ <b>SB492L</b>	Shadow box, galvanized	7"	23"	4.5 kg
				10 lbs
☐ <b>SB492S</b>	Shadow box, galvanized	4"	23"	4 kg
				9 lbs

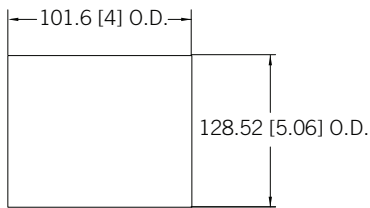
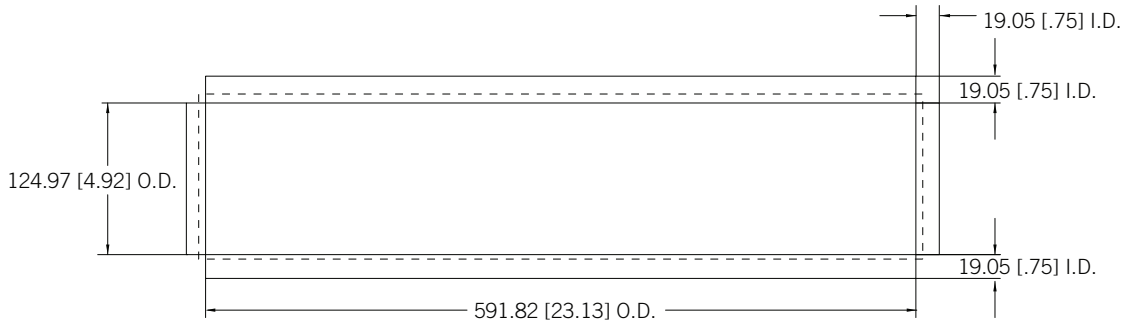
Dimensions



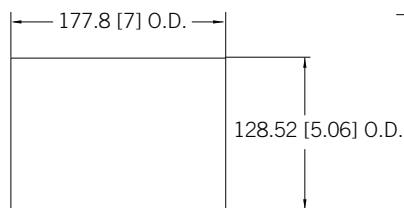
**BOX**



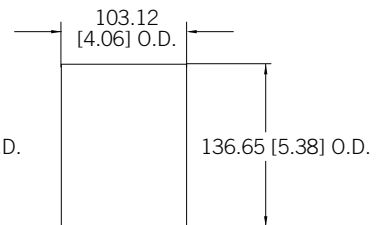
**SLEEVE**



**SHORT SLEEVE**



**LONG SLEEVE**



**BOX**