







SW12

Pot & Pan Washer

-  12 racks per hour | 10 pans per rack
-  Fully automatic operation with power on/off button
-  Hold down rack system for secure washing
-  Available in front load, corner load and pass-through configurations

STANDARD FEATURES

- Wash tank heat: electric, gas, steam injection or steam coil
- Pressure regulator
- Single point electrical connection
- Low water cut-off
- Automatic fill
- Three position wash selector (complete cycle times): Light (260 seconds), Medium (380 seconds), Heavy (500 seconds)
- Emergency cycle stop button
- Wash pump pressure gauge
- Rinse pressure gauge
- Digital temperature controller for wash and rinse
- Pan washer clean-up hose and spray gun
- Lift-up door design
- Detergent connection provisions
- Pressure regulator to maintain 20 psi rinse flow
- SureFire® Start-Up & Check-Out Service

OPTIONS

- Stainless steel steam coil tank heat
- Steam booster
- Electric booster
- Security package
- Totally enclosed motor
- Recommended option: power vent fan



SPECIFICATIONS

Capacity	Racks Per Hour	12
	Sheet Pans Per Hour	156
Heating & Venting	Wash Tank Heat	9 kW
	Rinse Booster Heat	9 kW
	Exhaust Hood Requirement	6" Steam Exhaust Vent
Water	Water Inlet Temperature	110°F
	Water Consumption (20 PSI)	49.5 gal/hr
	Wash Tank Capacity	30 gal
	Peak Drain Flow	5 gal/min
Steam	Steam Tank Consumption (Injected, 10-15 PSI)	18 lbs/hr
	Steam Tank Consumption (Coil, 10-15 PSI)	36 lbs/hr
Gas	BTUH Capacity	36,000
	Natural Gas Consumption (7" W.C. Minute)	35 CFH
	Propane Consumption (11" W.C. Minute)	14 CFH
Other	Wash Motor HP	7.5
	Shipping Weight	1175 lbs

ELECTRICAL

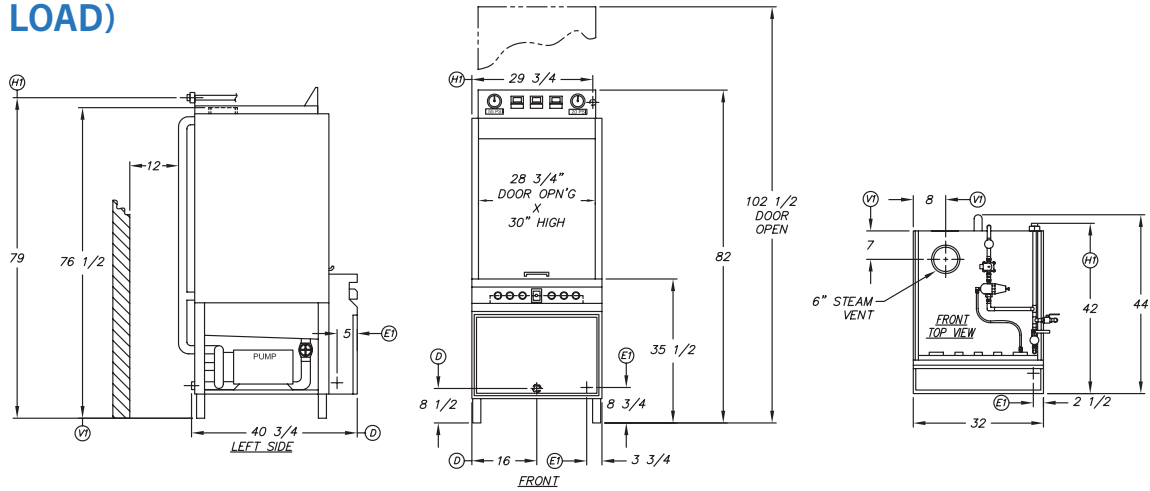
		Electric	Gas	Steam
Electrical Options	208/60/3	70.0 amps	45.0 amps	20.0 amps
	230/60/3	64.4 amps	41.8 amps	19.2 amps
	460/60/3	33.2 amps	21.9 amps	10.6 amps

PROJECT BUILD FORM

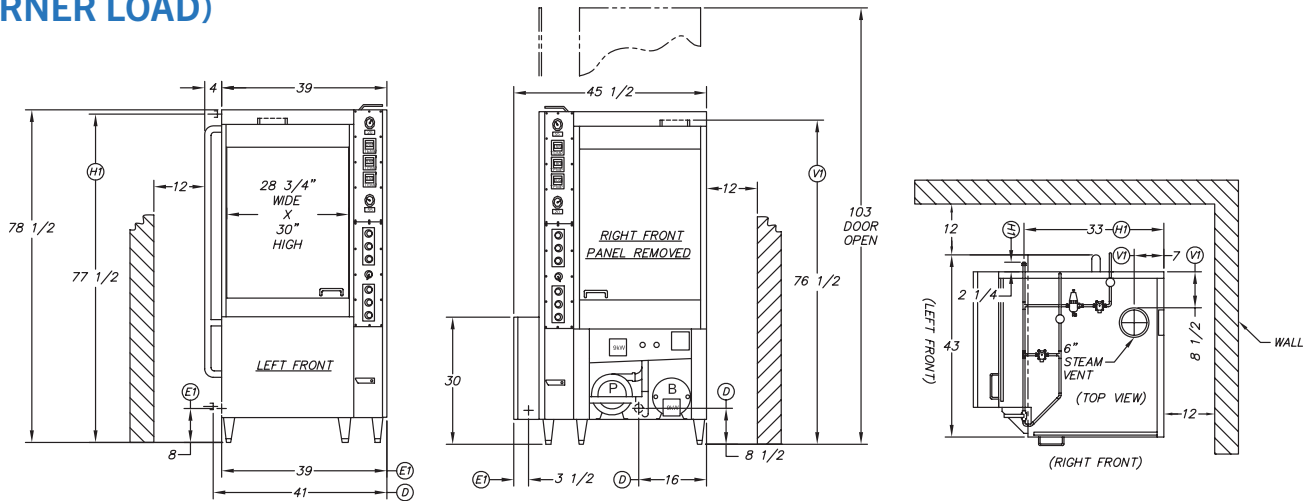
Project Name	
Project Manager	
Configuration	Electric <input type="checkbox"/>
	Steam <input type="checkbox"/>
	Gas <input type="checkbox"/>
Electrical	208/60/3 <input type="checkbox"/>
	230/60/3 <input type="checkbox"/>
	460/60/3 <input type="checkbox"/>
Approval (Please Check One)	Approved <input type="checkbox"/>
	Approved as Noted <input type="checkbox"/>
	Rejected <input type="checkbox"/>
Signature	Date
Internal Info	Serial Number
	Configuration Code

Contact Insinger Sales at 800-344-4802 for an installation drawing specific to your application.
 Note: Due to product improvement we reserve the right to change information and specifications without notice.

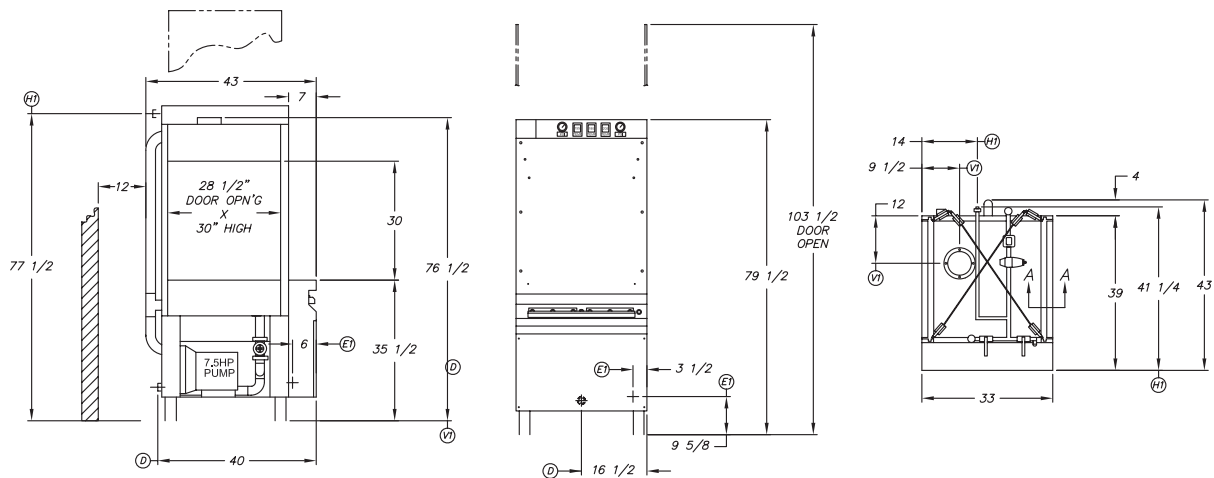
TECHNICAL DRAWINGS (FRONT LOAD)



TECHNICAL DRAWINGS (CORNER LOAD)



TECHNICAL DRAWINGS (PASS THROUGH)



Contact Insinger Sales at 800-344-4802 for an installation drawing specific to your application.
Note: Due to product improvement we reserve the right to change information and specifications without notice.