



460 Southport Commerce Blvd.  
 Spartanburg SC 29306  
 Phone: 864-574-6004  
 Fax: 864-574-6005  
 www.ojedausa.com  
 sales@ojedausa.com

Project: \_\_\_\_\_  
 Model #: \_\_\_\_\_  
 Item #: \_\_\_\_\_ Qty: \_\_\_\_\_  
 Approval: \_\_\_\_\_

# OPEN AIR MERCHANDISER

# ALPA 77H



### STEEL CONSTRUCTION

Robust steel construction minimizes the use of plastic materials resulting in an environmentally friendly design.

### CARE FREE CONDENSER

The finless spiral condenser design prevents dust/dirt buildup allowing maximum long term efficiency.

### ELECTRONIC CONTROL

The intelligent temperature control is programmed to ensure the correct operation of the equipment and maintain products at an optimum temperature.

### LED LIGHTING

LED lighting lasts longer than fluorescent lighting, it reducing energy consumption, which generates minimal heat. All of this makes LED lighting great for the environment.

### HOT GAS EVAPORATION

Hot gas heated drain pan for condensate evaporation that eliminates the need of floor drains or electric heaters.

### NIGHT CURTAIN

30% less energy consumption when closed.

### OPERATION TEMPERATURE

33°F to 38°F

### CUSTOM GRAPHICS

Standard color: black

Dimensions			Crated Dimensions			Shelves	HP	Voltage	NEMA config	Amps	Crated Weight		
	W	D	H		W	D	H	5	2x 1/4	120	5-20P	10	524 lbs
(in)	35.2	30.5	78.9	(in)	39	36.3	82.7	Net Capacity (cf): 14			Energy Consumption: 15.89 kw-hr/day		
(mm)	895	775	2005	(mm)	990	920	2100						

\*Inches rounded up one decimal place \*Specifics may change without notification



## CABINET CONSTRUCTION

- High-density, CFC-Free, polyurethane insulation
- Large low-E double pane tempered thermalglass side panels
- Manual retractable night curtain for increased energy savings
- Exterior: Galvanized metal cabinet with powder coated painted surface
- Interior: Easy to clean pre-painted steel

## SHELVING

- Adjustable, dual-position shelves with tag molding.

## LIGHTING

- LED horizontal and vertical lighting

## OPERATING CONDITIONS

- Open Air models should not be installed in any area where the air curtain will be disrupted. This includes placement near any g HVAC vent, open doorway, or fan.
- The unit is rated for an environment where temperatures remain below 75°F and humidity does not exceed 55%
- Areas with direct sunlight should also be avoided

## REFRIGERATION

- Maintenance free condenser
- Automatic defrost cycle
- Hot gas heated pan for condensate evaporation
- Electronic temperature control
- Easy to reach components for maintenance
- R-290 refrigerant

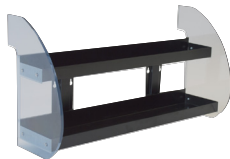
## ACCESSORIES

- 6" stainless steel legs
- 3" and 5" Casters
- Lockable security cage
- Clear cool curtain
- Peg bar system for hanging product
- Shelf product retainers
- Custom graphics
- Saddle bag merchandisers
- Front product merchandiser

## WARRANTY

- 3 year parts and labor warranty
- 5 year compressor

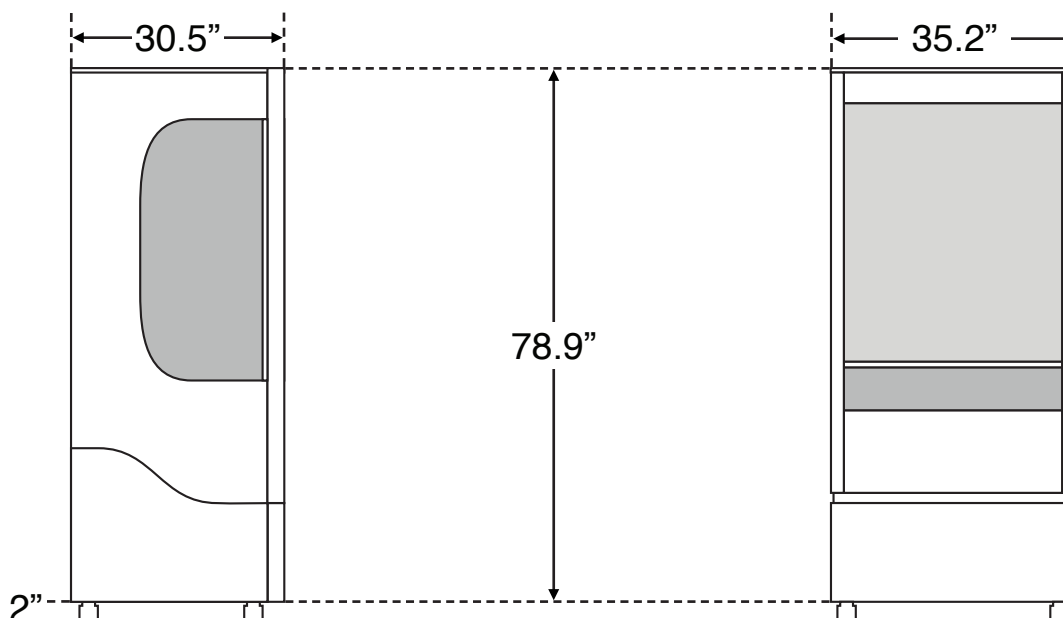
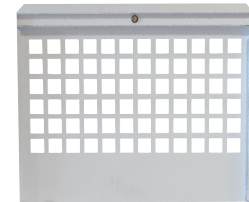
### FRONT PRODUCT DISPLAY



### SIDE PRODUCT DISPLAY



### LOCKABLE SECURITY CAGE



\*Specifics may change without notification

