

PASTA COOKER | GAS

**RINA
REGINA**



ARCOBALENO®
PASTA EQUIPMENT

APCG35H/35HA

HIGH BTU PASTA COOKER



Intertek
CONFORMS TO UL STD 197, NSF/ANSI STANDARD 4
CERTIFIED TO CSA STD C22.2 #109



Intertek



STANDARD FEATURES

- Versatile pasta cooker; cook fresh, dry & frozen pastas plus... noodles, vegetables and more
- Automatic water fill (APCG35HA)
- Automatically maintains water level - steam or boil (APCG35HA)
- Water safety sensor - will not run tank dry (no more burnt tanks)
- 80,185 BTU
- Fast Recovery, high efficiency, and powerful for frozen products
- 11 gallon tank
- 316 stainless steel cooking tank - corrosion resistant, marine grade
- Rounded corners, rear backsplash, and stainless steel construction - sanitary finish
- Innovative safety features
- Large diameter starch skimmer drain
- Overflow safety drain and floor drain
- Variable burner temperature
- Equipped with gas regulator, Piezoelectric ignition, pilot light and thermocouple safety valves
- Height adjustable legs - counter height 35" to 37"
- Equipped for Natural Gas installation
- Liquid Propane (LP) is available upon request at time of order
- Factory and on-location training. The Only Full-Service Pasta Machine Manufacturer in North America!



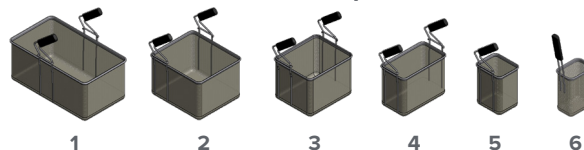
APCG35H
"Rina"



APCG35HA
"Regina"

Automatic water fill

Pasta Basket Options



Pasta Basket Combinations



Basket #	1	2	3	4	5	6
Capacity* (lbs)	14-15 lbs	8-9 lbs	6-7 lbs	3-4 lbs	1-2 lbs	0.75-1 lb
Capacity* (oz)	224-240 oz	128-144 oz	96-112 oz	48-64 oz	16-32 oz	12-16 oz
Capacity* (g)	6,350-6,804 g	3,629-4,082 g	2,722-3,175 g	1,361-1,814 g	454-907 g	340-454 g

*For short pastas, capacity varies by shape

OPTIONAL FEATURES & ACCESSORIES

- Variety of pasta basket options - pasta baskets sold separately
- Robotic basket lift with adjustable digital timers (APCL35)
- 1 single point electric plug available with APCL35 Lift option
- Casters, user responsible for installation, set of 4 with 2 locking
- Casters, factory installed, set of 4 with 2 locking
- Custom door and panel colors

Please refer to www.ralcolor.com for custom color choices.



WARRANTY

One Year: For more information visit arcobalenollc.com/warranty.html



TRY BEFORE YOU BUY

In an effort to ensure success, we maintain a test kitchen where you can have your very own recipe tested for quality! Call for details.



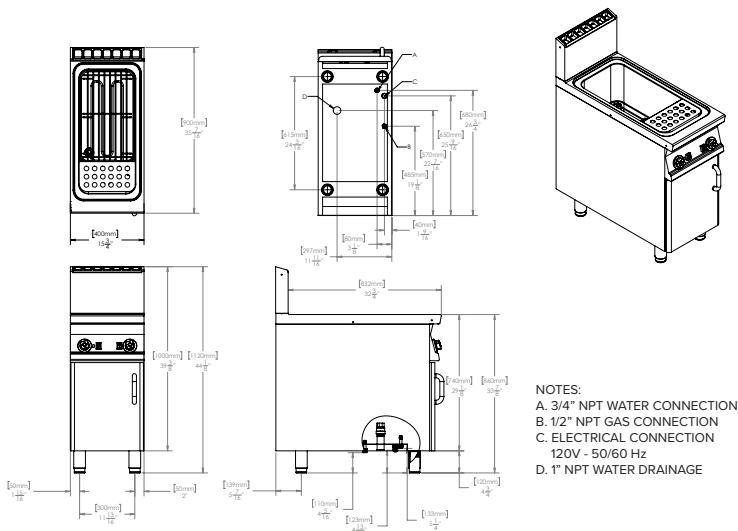
PASTA COOKER | GAS



APCG35H/35HA TECHNICAL SPECIFICATIONS

Model	APCG35H	APCG35HA
Tank	1	1
Tank Volume	11 gallon	11 gallon
Tank Dimensions	12.25"W x 20.25"D x 13"H	12.25"W x 20.25"D x 13"H
Natural Gas/LP Connection	1/2" NPTM (Qty: 1)	1/2" NPTM (Qty: 1)
Natural Gas/LP Pressure	7" WC max NG / 11" WC max LP	7" WC max NG / 11" WC max LP
Total Gas Power	80,185 BTU	80,185 BTU
Total Electric Power	120V/1/60Hz 0.015kW (0.24 Amps @ 120V)	120V/1/60Hz 0.018kW (0.29 Amps @ 120V)
Nema Plug	5-15P	5-15P
Water Connection	3/4" NPTM (Qty: 1)	3/4" NPTM (Qty: 1)
Water Pressure	14.5 - 72.5 psi	14.5 - 72.5 psi
Water Draining	1" NPTM (Qty: 1)	1" NPTM (Qty: 1)
Machine Dimensions	15.75"W x 35.50"D x 45"H	15.75"W x 35.50"D x 45"H
Shipping Dimensions	17"W x 38"D x 50"H	17"W x 38"D x 50"H
Machine Weight	170 lbs	170 lbs
Shipping Weight	195 lbs	195 lbs
Shipping Class	92.5	92.5

APCG35H



APCG35HA

