



- Clean, bold tubular style is perfect for displaying draft beer variety.
- The draft tower is a marketing tool, not just a bar fixture.
- Exterior finish will provide years of durable service.
- All stainless steel contact with the beer for the ultimate in draft purity.



PVD Brass  
**PT4A-8PVDKR**



Stainless Steel  
**PT4A-8PSSKR**

## Features

Faucet knobs not included.



PVD Brass  
Tarnish Free.



Stainless Steel  
beer contact for the pure  
taste of fresh draft beer.

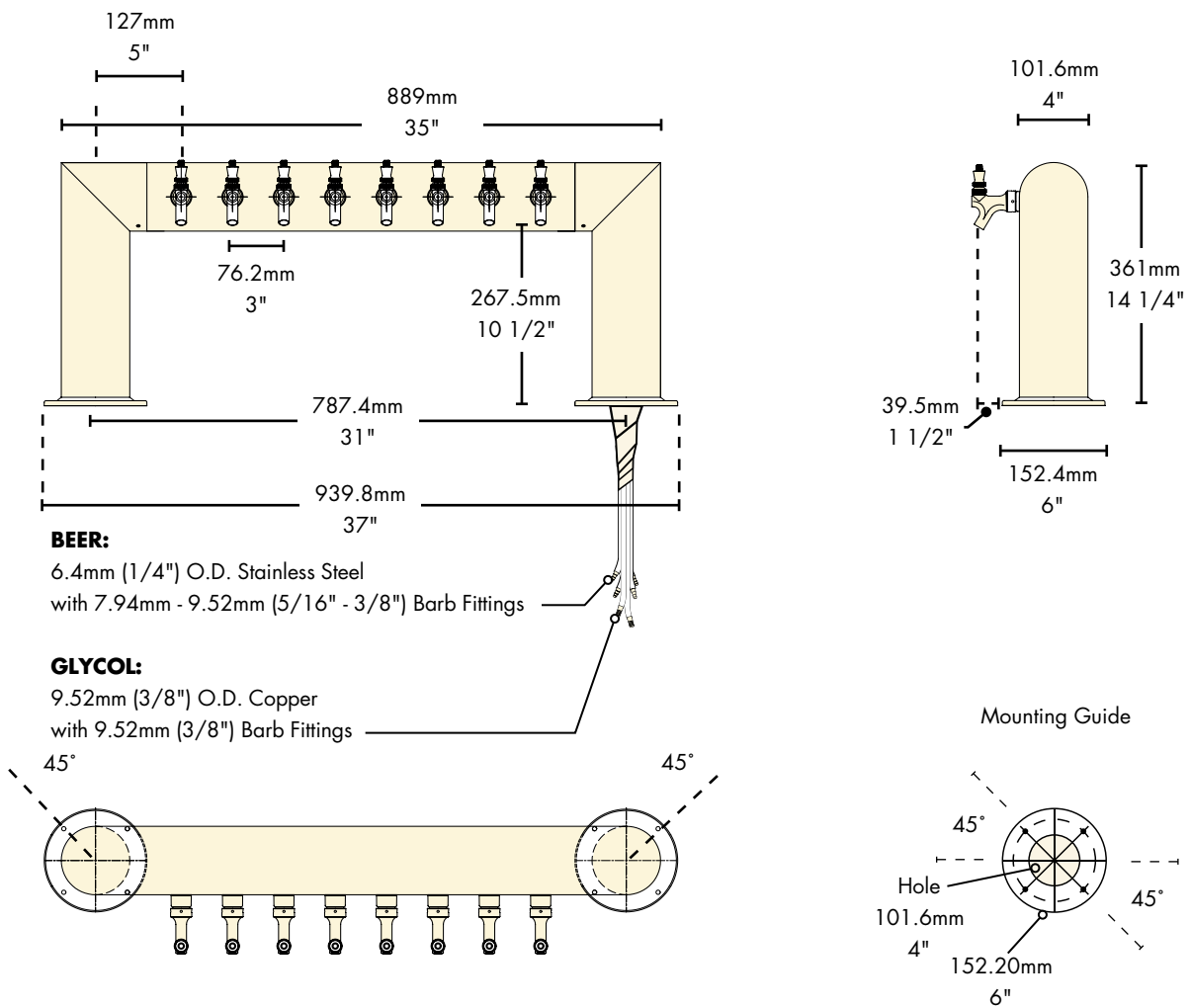


The integrated Kool-Rite module provides  
optimum cooling at the point of dispense. The  
module construction makes the installation  
process as simple as PLUG "N" POUR.

# Specifications

Part No.	Faucets	Finish	Dispense System	Shipping Weight	Box Dimensions
<input type="checkbox"/> <a href="#">PT4A-8PSSKR</a>	8	Polished S/S	Kool-Rite (Glycol)	22 kg 48 lbs	1143mm L x 914mm W x 406mm H 45"L x 36"W x 16"H
<input type="checkbox"/> <a href="#">PT4A-8PVDKR</a>	8	PVD Brass	Kool-Rite (Glycol)	22 kg 48 lbs	1143mm L x 914mm W x 406mm H 45"L x 36"W x 16"H

# Dimensions



Copyright ©2011 Micro Matic USA, Inc. All Rights Reserved.

00175D1008



[www.micromatic.com](http://www.micromatic.com)

Toll Free: 1-(866) 327-4159

West	Central	Southeast	Northeast
------	---------	-----------	-----------

19791 Bahama Street  
Northridge, CA 91324  
Tel. (818) 701-9765  
Fax. (818) 701-9844

10726 North Second Street  
Machesney Park, IL 61115  
Tel. (815) 968-7557  
Fax. (815) 968-0363

2364 Simon Court  
Brooksville, FL 34604  
Tel. (352) 799-6331  
Fax. (352) 796-2429

4601 Saucon Creek Road  
Center Valley, PA 18034  
Tel. (610) 625-4464  
Fax. (610) 625-4466