



IMPORTANT FOR FUTURE REFERENCE

Please complete this information and retain this manual for the life of the equipment:

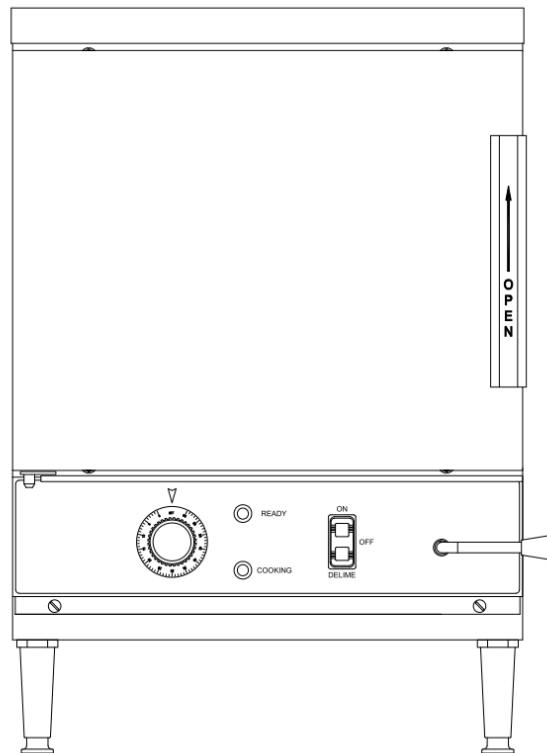
Model #: _____

Serial #: _____

Date Purchased: _____

PARTS LIST


Electric Counter Convection Steamer SXB!(A



WARNING

Improper installation, adjustment, alteration, service or maintenance can cause property damage, injury or death. Read the installation, operating and maintenance instructions thoroughly before installing or servicing this equipment.

CROWN FOOD SERVICE EQUIPMENT

 A Middleby Company

70 Oakdale Road, Downsview (Toronto) Ontario, Canada, M3N 1V9

Telephone: 919-762-1000

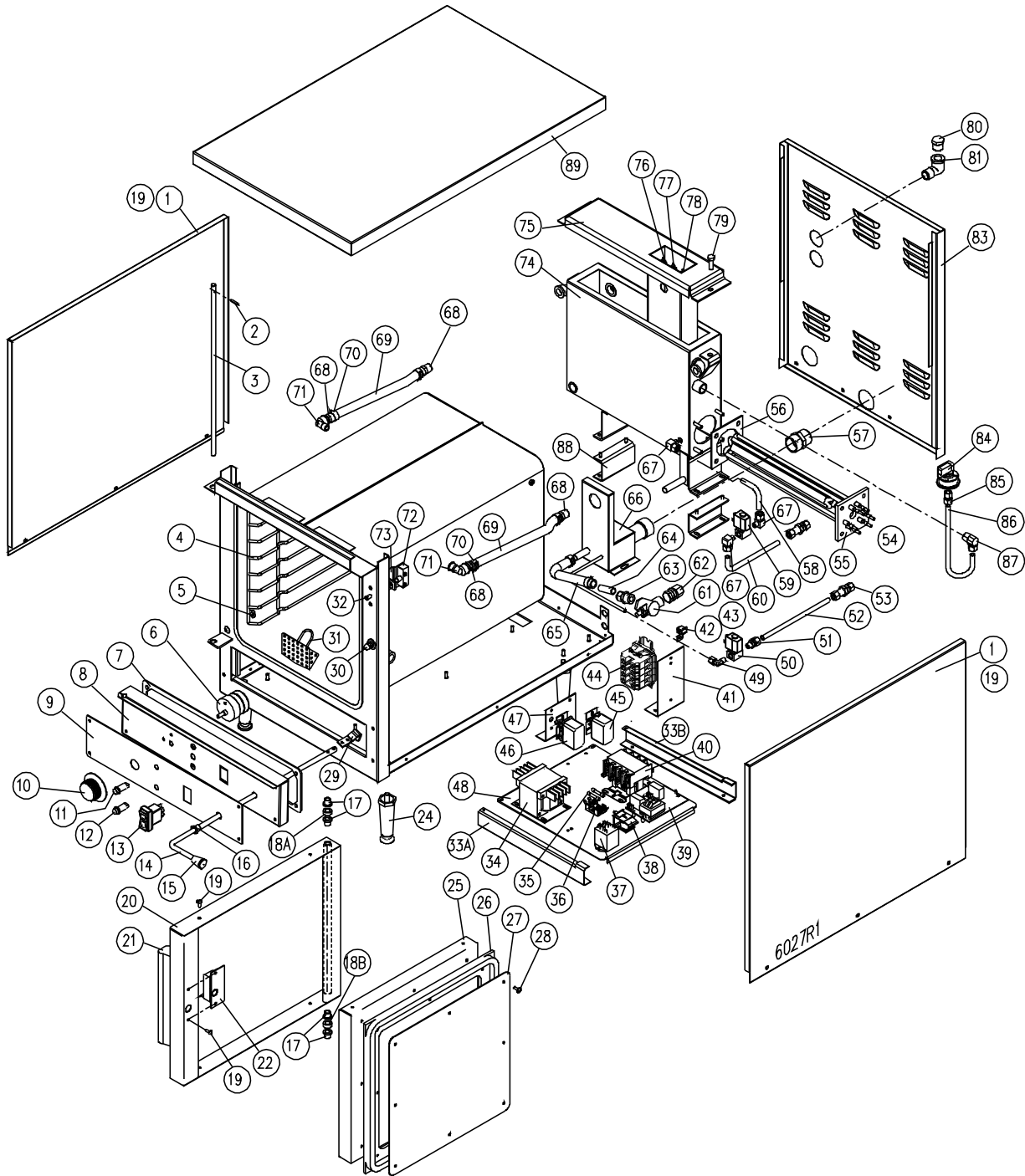
www.crownsteamgroup.com

Printed in Canada



PARTS LIST, ELECTRIC COUNTER CONVECTION STEAMER, MODEL SXN-4M

FIGURE 1



PARTS LIST, ELECTRIC COUNTER CONVECTION STEAMER, MODEL SXN-4M

FIGURE 1

<u>ITEM</u>	<u>PART NO.</u>	<u>DESCRIPTION</u>	<u>QTY.</u>	
	1.	7964-1	Cover, Side	2
	2.	1-T5U6	Roll Pin	1
	3.	3977-4	Hinge Rod	1
	4.	2681-2	Pan Rack	2
	5.	4721-1	Rack Hanger Pin Assembly	6
**	6.	4-T209-1	Timer, 60 Minutes, 240V, 50/60 Hz	1
		9386-2	Timer, 120 Minutes, 240V, 50/60 Hz, Optional	1
*		9109-1	Rotary Shaft Seal, 1/4	1
	7.	5923-1	Front Panel Gasket	1
	8.	8183-1	Front Cover	1
**	9.	8182-1	Control Panel Decal, Red	1
		8182-2	Control Panel Decal, Burgundy	1
**	10.	4103-1	Timer Knob, 60 Minutes, 50 Hz, Optional	1
		4104-1	Timer Knob, 60 Minutes, 60 Hz	1
		9387-1	Timer Knob, 120 Minutes, 60 Hz, Optional	1
	11.	4-PL04-1	Pilot Light, Green, 250V	1
	12.	4-PL07-1	Pilot Light, Red, 250V	1
	13.	9130-1	Rocker Switch DPDT, 250V	1
	14.	6017-1	Handle, Drain	1
	15.	4935-1	Knob	1
	16.	9041-2	Plastic Bushing	1
	17.	8-5078	Door Bushing	4
	18A.	5716-1	Spacer, Upper	1
	18B.	5717-1	Spacer, Lower	1
	19.	M33S-1032-12	Truss, Hd. Screw, 10-32 UNF x 1/2	12
	20A.	8-5076-7	Door Assembly	1

PARTS LIST, ELECTRIC COUNTER CONVECTION STEAMER, MODEL SXN-4M

<u>ITEM</u>	<u>PART NO.</u>	<u>DESCRIPTION</u>	<u>QTY.</u>	
20.	2837-1	Outer Door Shell	1	
21.	3903-2	Door Handle Assembly	1	
*	3646-1	Decal, Door Handle	1	
*	4090-2	Door Handle	1	
*	4089-2	Door Handle Plate	1	
*	M68S-1420-134	Socket Hd. Screw 1/4-20 UNC x 1-3/4	2	
*	M68S-1420-34	Socket Hd. Screw, 1/4 - 20 UNC x 3/4	1	
*	4088-1	Door Handle Spacer	2	
*	S01S-14	Split Lockwasher, 1/4	2	
*	9030-1	Hex Nut, 1/4 - 20 UNC	2	
22.	8-5068-9	Latch Assembly	1	
*	23.	3502-1	Steam Diverter	2
24.	5-FS66	Adjustable Leg	4	
25.	8-5065-7	Door Panel	1	
26.	8-5063-7	Door Gasket	1	
27.	8-5064-7	Gasket Retaining Plate	1	
28.	9-1011-1	Gasket Panel. Screw, 10-32 UNF x 1/2	8	
29.	6018-1	Valve Handle Bracket	1	
*	M68S-1032-58	Socket Hd Screw 10-32 UNC x 5/8	2	
30.	8-5021	Striker	1	
*	8-5022	Front Washer	1	
*	S01X-12	Split Lockwasher, 1/2	1	
*	1-89S0	Hex Nut, 1/2 - 20 UNF	1	
31.	5224-2	Compartment Strainer	1	
32.	9-3336	Push Rod c/w Retaining Rings	1	
33A.	7962-1	Rail Bracket, Front	1	

PARTS LIST, ELECTRIC COUNTER CONVECTION STEAMER, MODEL SXN-4M

<u>ITEM</u>	<u>PART NO.</u>	<u>DESCRIPTION</u>	<u>QTY.</u>	
33B.	7962-2	Rail Bracket, Rear	1	
* **	34.	4-T251	Transformer, 380/220V, 50/60 Hz. 100VA	1
		4-T251	Transformer, 415/240V, 50/60 Hz, 100VA	1
		4-T255	Transformer, 480/240V, 60 Hz, 100VA	1
**	35.	9092-2	Fuse, 2 Amp., 250V (208, 220, 240V)	2
		9092-2	Fuse, 2 Amp., 250V (380/220, 415V/240V)	1
		9001-2	Fuse, 1/2 Amp., 600V (380-480V)	2
**	36.	9068-1	Fuse Holder, 25A, 300V Max. (208, 220, 240V)	2
		9068-1	Fuse Holder, 25A, 300V Max. (380/220, 415/240V)	1
		9002-1	Fuse Holder, 30A, 600V (380, 415, 480)	2
	37.	9332-2	Relay DPDT, 240V	1
	38.	4742-1	Buzzer, 230V	1
**	39.	4038-3	Level Control Board, 208/240VAC, 10K, OHM	1
		5230-2	Level Control Board, 208/240/VAC, 1M, OHM	2
**	40.	4-CG42-1	Contactator, 4 Pole, (208 - 240V)	1
		9348-208	Contactator, 3 Pole, (380, 415, 480)	1
	41.	5917-1	Terminal Block Bracket	1
	42.	4-70EU	Ground Lug	1
	43.	4188-1	Earth/Ground I.D. Tag	1
	44.	6161-3	Modular Terminal Assembly, 3 Pole (380V-480V)	1
		Includes the following parts:		
		9374-1	Modular Terminal, Grey	3
		9375-1	End Plate	1
		9369-1	End Clamp	2
		9368-079	Mounting Rail, 79 mm	1

PARTS LIST, ELECTRIC COUNTER CONVECTION STEAMER, MODEL SXN-4M

<u>ITEM</u>	<u>PART NO.</u>	<u>DESCRIPTION</u>	<u>QTY.</u>	
	6161-4	Modular Terminal Assembly, 4 Pole (208V-240V)	1	
		Includes the following parts:		
	9374-1	Modular Terminal, Grey	4	
	9375-1	End Plate	1	
	9369-1	End Clamp	2	
	9368-098	Mounting Rail, 98 mm	1	
	6161-4N	Modular Terminal Assembly, 3 Pole w/Neutral (380/220V-415/240V)	1	
		Includes the following parts:		
	9374-1	Modular Terminal, Grey	3	
	9374-2	Modular Terminal, Blue	1	
	9375-1	End Plate	1	
	9369-1	End Clamp	2	
	9368-098	Mounting Rail, 98 mm	1	
45.	9128-1	High Limit Thermostat	1	
46.	9126-1	Operating Thermostat	1	
47.	5916-1	Thermostat Bracket	1	
48.	7961-1	Component Mounting Board	1	
49.	3-694A	Elbow, 90°, Brass, 1/4 C x 1/8 MPT	1	
50.	5162-2	Solenoid Valve, Cooling, 240V	1	
51.	3-686A	Connector, Brass, 3/8 C x 1/8 MPT	1	
52.	9705-38-070	Tube, 3/8 Copper, Condenser IN	1	
53.	3-776	Bulkhead Union, Brass, 3/8 C	2	
54.	9030-1	Hex Nut, 1/4 - 20 UNF	4	
**	55.	7972-1008	Heating Element, 10 kW, 208V	1
		7972-1020	Heating Element, 10 kW, 380/220V	1

PARTS LIST, ELECTRIC COUNTER CONVECTION STEAMER, MODEL SXN-4M

<u>ITEM</u>	<u>PART NO.</u>	<u>DESCRIPTION</u>	<u>QTY.</u>
	7972-1040	Heating Element, 10 kW, 415/240V	1
	7972-1077	Heating Element, 10 kW, 480/277V	1
56.	5869-1	Element Gasket	1
57.	4771-1	Adapter, 1 M x 1 M	1
58.	6316-1	Tube, 3/8 Copper, Filling	1
59.	5162-2	Solenoid Valve, Fill, 240V	1
60.	6315-1	Tube, 3/8 Copper, Generator IN	1
61.	9336-1	Ball Valve, Drain	1
62.	3-688D	Connector, Tube to Male Pipe	1
63.	3-668D	Connector, Tube to Female Pipe	1
64.	9705-19-014	Tube, 1/2 x 1-1/2 Lg.	1
65.	9268-052	Silicone Hose, 1/2 I.D. x 5-1/4	1
66.	7965-1	Drain Box	1
67.	3-696A	Elbow 90°, Brass, 3/8 C x 1/8 MPT	3
68.	3-1258C	Hose Coupler, Brass 1/2 x 3/8 MPT	4
69.	9268-114	Silicone Hose, Left Hand, 1/2 I.D. x 11-1/2	2
70.	9337-13ST	Hose Clamp, CTL-13	6
71.	3-116CB	Forged Str. Elbow 90°, Brass 3/8 FPT x 1/4 MPT	2
72.	9-3213	Limit Switch	1
73.	5908-1	Bracket, Door Switch	1
74.	7968-1	Generator Tank	1
75.	7971-1	Tank Cover	1
*	5920-1	Tank Gasket	1
76.	3738-3	Probe, Low Level Cut-Off, 5 Lg.	1
77.	3738-2	Probe, Low Level, 4-1/4 Lg.	1
78.	4-LLP2	Probe, High Level, 3-11/16	1

PARTS LIST, ELECTRIC COUNTER CONVECTION STEAMER, MODEL SXN-4M

<u>ITEM</u>	<u>PART NO.</u>	<u>DESCRIPTION</u>	<u>QTY.</u>
79.	M50S-51618-1	Hex Hd. Bolt, 5/16 - 18 UNC x 1 Lg.	2
80.	3-121D	Hex Hd. Plug, Brass, 1/2 NPT	1
81.	3-116D	Forged Street Elbow, 90°, Brass 1/2 NPT	1
82.	4195-3	Label, Delime	1
83.	7960-1	Back Panel	1
84.	5445-1	Pressure Switch, Safety	1
85.	3-666A	Connector Brass, 3/8 C x 1/8 FPT	1
86.	5918-1	Pressure Switch Tube, 3/8	1
87.	3-696C	Elbow Brass, 90°, 3/8 C x 3/8 MPT	1
88.	6024-1	Support Channel	2
89.	7963-1	Top Cover	1
*	M23S-1420-12	Binding Hd. Screw, 1/4 - 20 UNC x 1/2	3
*	90. 9084-1	Nut Cage, 1/4 - 20 UNC	3
*	91. 4204-70	Wire Harness, Control Circuit	1
*	92. 4204-71	Wire Harness, Load, 208 - 240 VAC	1
*	93. 4204-72	Wire Harness, Load, 380 - 480 VAC	1
*	94. 9096-1	Toggle Switch (Optional - Constant Steam)	1
* NOT SHOWN			
** SELECT AS REQUIRED			