



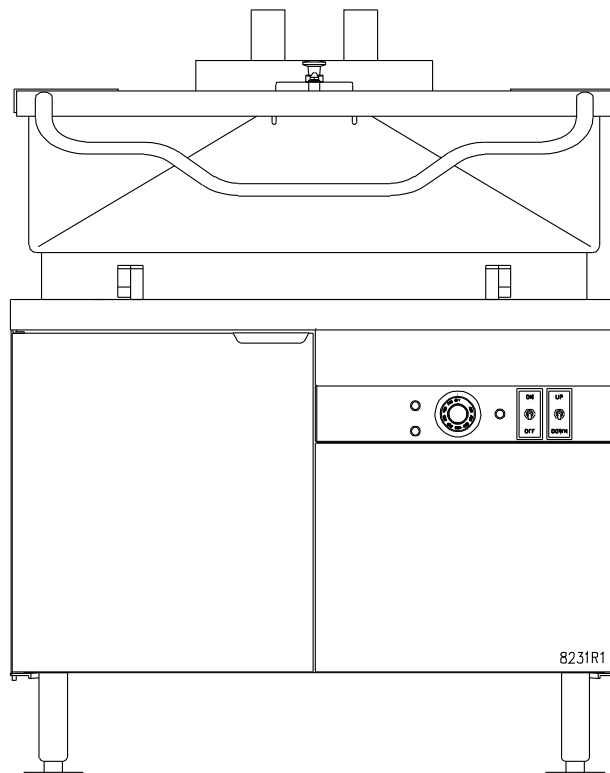
IMPORTANT FOR FUTURE REFERENCE
Please complete this information and retain this manual for the life of the equipment:

Model #: _____
Serial #: _____
Date Purchased: _____

PARTS LIST

Gas Modular Skillets


GMTS-30 GMTS-40 GMTS-60



 **WARNING**

Improper installation, adjustment, alteration, service or maintenance can cause property damage, injury or death. Read the installation, operating and maintenance instructions thoroughly before installing or servicing this equipment.

CROWN FOOD SERVICE EQUIPMENT

 A Middleby Company

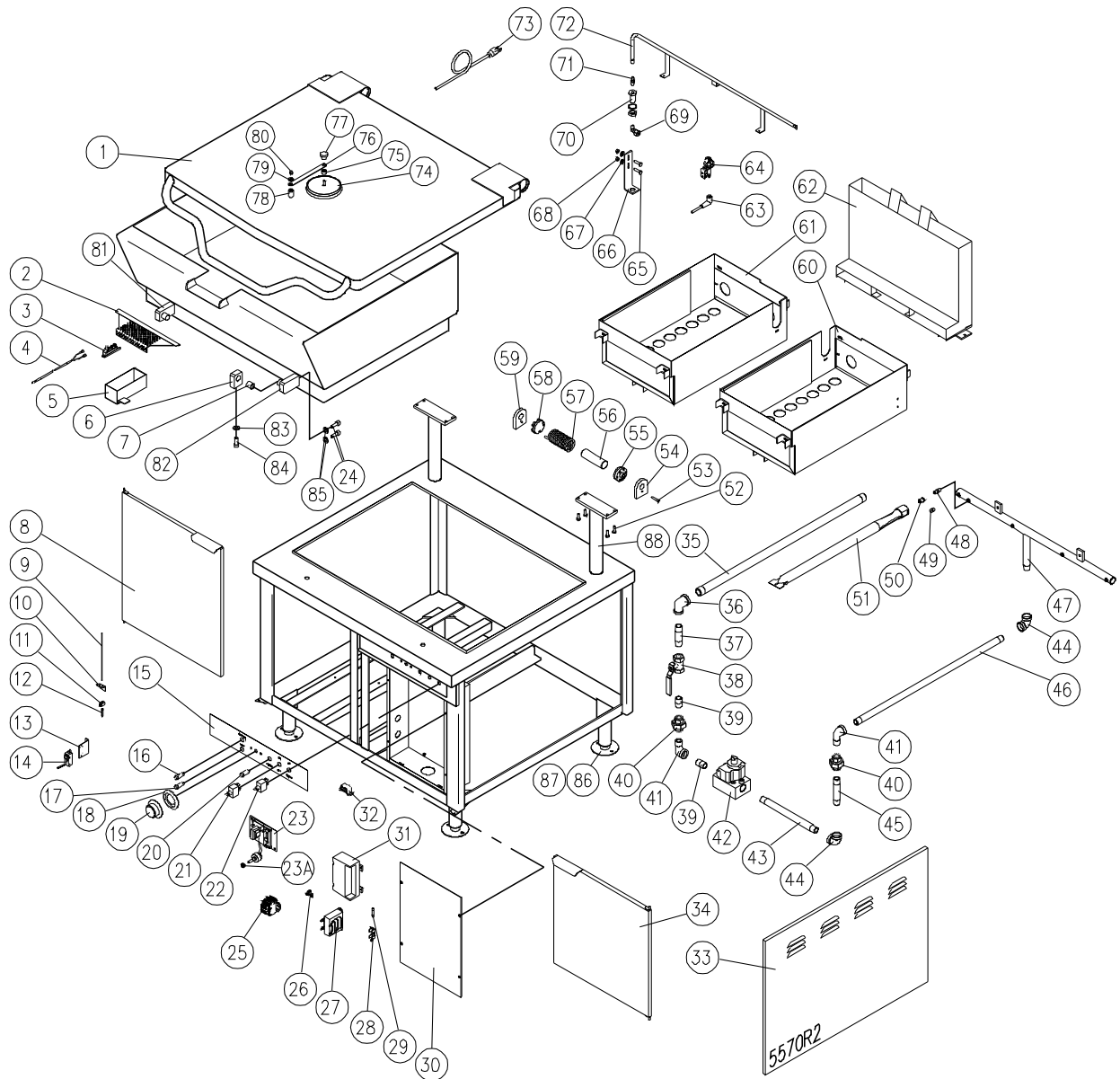
70 Oakdale Road, Downsview (Toronto) Ontario, Canada, M3N 1V9
Telephone: 919-762-1000 www.crownsteamgroup.com

Printed in Canada



PARTS LIST, GAS TILTING SKILLET, MODELS GMTS-30, GMTS-40, GMTS-60

FIGURE 1



PARTS LIST, GAS TILTING SKILLET, MODELS GMTS-30, GMTS-40, GMTS-60

<u>ITEM</u>	<u>PART NO.</u>	<u>DESCRIPTION</u>	<u>QUANTITY</u>		
			<u>GMTS-30</u>	<u>GMTS-40</u>	<u>GMTS-60</u>
** 1.	8113-4	Cover Assembly	1		
	8114-4	Cover Assembly		1	
	8115-4	Cover Assembly			1
2.	7380-1	Pour Lip Strainer	1	1	1
3.	9-3021	High Limit Thermostat	1	1	1
4.	9288-60	Thermocouple	1	1	1
5.	2426-1	High Limit Box	1	1	1
6.	5877-1	Base Bracket Assembly	2	2	2
7.	3704-1	Bushing	2	2	2
** 8.	3209-1	Left Hand Door Assembly	1		
	3596-1	Left Hand Door Assembly		1	1
9.	9-3443-1	Actuator Rod, 1/8 x 18"	1	1	1
10.	9-3444	Actuator Rod Guide	1	1	1
11.	9-3445	Lock Collar	2	2	2
12.	9-3446	Spring	1	1	1
13.	3838-1	Micro Switch Bracket	1	1	1
14.	4065-2	Micro Switch	1	1	1
** 15.	9-3393	Decal	1		
	9-3394	Decal		1	1
16.	5396-7	Pilot Light, Ignition - Green, 28V	1	1	1
17.	5396-8	Pilot Light, Temperature - Red, 28V	1	1	1
18.	4-TB05	Bezel	1	1	1
** 19.	4352-1	Dial (F)	1	1	1

PARTS LIST, GAS TILTING SKILLET, MODELS GMTS-30, GMTS-40, GMTS-60

<u>ITEM</u>	<u>PART NO.</u>	<u>DESCRIPTION</u>	<u>QUANTITY</u>		
			<u>GMTS-30</u>	<u>GMTS-40</u>	<u>GMTS-60</u>
	4689-1	Dial (C)	1	1	1
**	20.	4-PL06 Pilot Light, Motor - Amber, 125V	1	1	1
	4-PL06-1	Pilot Light, Motor - Amber, 250V	1	1	1
	21.	9110-1 Power Switch	1	1	1
	22.	9111-1 Up/Down Switch	1	1	1
**	23.	5555-1 Temperature Control c/w Potentiometer, 120V	1	1	1
	5555-2	Temperature Control c/w Potentiometer, 240V	1	1	1
*		9109-2 Rotary Shaft Seal	1	1	1
	24.	M68P-3816-1 Socket Hd Screw, 3/8-16 x 1 Lg.	4	4	4
	25.	9390-2 Terminal Block Assy	1	1	1
		Includes the following parts:			
	9391-1	Modular Terminal	2	2	2
	9392-1	End Plate	1	1	1
	9393-1	End Clamp	2	2	2
	9394-053	Mounting Rail	1	1	1
	26.	4-35EU Ground Lug	1	1	1
**	27.	9-3383 Transformer, 120-24V	1	1	1
	9123-1	Transformer, 230-24V	1	1	1
	28.	9068-1 Fuse Holder	1	1	1
	29.	9092-1 Fuse, 1 Amp., 250V	1	1	1
**	30.	3684-1 Box Cover	1		
	3684-2	Box Cover		1	1

PARTS LIST, GAS TILTING SKILLET, MODELS GMTS-30, GMTS-40, GMTS-60

<u>ITEM</u>	<u>PART NO.</u>	<u>DESCRIPTION</u>	<u>QUANTITY</u>			
			<u>GMTS-30</u>	<u>GMTS-40</u>	<u>GMTS-60</u>	
31.	9210-2	Ignition Module	1	1	1	
32.	5-MC02	Magnetic Catch	1	1	1	
33.	3201-1	Side Panel	2	2	2	
**	34.	2573-1	Right Hand Door Assembly	1	1	1
		2573-2	Right Hand Door Assembly		1	1
35.	9010-300	Pipe, 3/4 x 30"	1	1	1	
36.	9014-1	Reducing Elbow, 3/4 x 1/2"	1	1	1	
37.	9009-030	Nipple, 1/2 x 3"	1	1	1	
38.	4918-1	Ball Valve, 1/2"	1	1	1	
39.	9009-000	Close Nipple, 1/2"	2	2	2	
40.	9015-3	Union, 1/2"	1	1	1	
41.	9012-3	Street Elbow, 1/2"	1	1	1	
**	42.	5450-1	Combination Gas Control, Natural	1	1	1
		5450-2	Combination Gas Control, L.P.	1	1	1
**	43.	9009-073	Nipple, 1/2 x 7-3/8"	1		
		9009-064	Nipple, 1/2 x 6-1/2"		1	1
44.	9011-3	Elbow, 1/2"	1	1	1	
45.	9009-050	Nipple, 1/2 x 5"	1	1	1	
46.	9009-264	Pipe, 1/2 x 26-1/2"	1	1	1	
**	47.	2432-1	Manifold Assembly	1		
		1189-1	Manifold Assembly		1	1
48.	3-122A	Orifice Nipple	4	6	6	
49.	9035-1	Pipe Plug, 1/8" NPT	1	1	1	
**	50.	9-3351-44	Burner Orifice #44, Natural	4		

PARTS LIST, GAS TILTING SKILLET, MODELS GMTS-30, GMTS-40, GMTS-60

<u>ITEM</u>	<u>PART NO.</u>	<u>DESCRIPTION</u>	<u>QUANTITY</u>			
			<u>GMTS- 30</u>	<u>GMTS- 40</u>	<u>GMTS- 60</u>	
	9-3351-47	Burner Orifice #47, Natural		6	6	
	9-3351-55	Burner Orifice #55, L.P.	4			
	9-3351-56	Burner Orifice #56, L.P.		6	6	
51.	7227-1	Burner	4	6	6	
52.	M50S-1420-34	Screw, 1/4 - 20 x 3/4	8	8	8	
53.	8-2029	Lock Pin	2	2	2	
54.	8-2035L	End Lock Plate	2	2	2	
55.	5428-1	Stationary Disc	2	2	2	
56.	5430-1	Core	2	2	2	
57.	8-2026	Spring	2	2	2	
58.	5429-1	Rotary Disc	2	2	2	
59.	8-2021	End Stop Plate	2	2	2	
**	60.	7260-1	Burner Box Assembly, R.H.	1		
		7262-1	Burner Box Assembly, R.H.		1	1
**	61.	7259-1	Burner Box Assembly, L.H.	1		
		7261-1	Burner Box Assembly, L.H.		1	1
**	62.	6891-1	Flue Assembly	1		
		6888-1	Flue Assembly		1	1
	63.	5169-2	Igniter Cable	1	1	1
**	64.	9-3380	Ignitor/Sensor Pilot, Natural	1	1	1
		9-3380-1	Ignitor/Sensor Pilot, L.P.	1	1	1
	65.	M50C-1420-12	Screw, 1/4 - 20 x 1/2"	2	2	2
	66.	3991-1	Lighter Orifice Bracket	1	1	1
	67.	S01C-14	Lock Washer, 1/4"	2	2	2
	68.	9029-1	Hex Nut, 1/4 - 20	2	2	2

PARTS LIST, GAS TILTING SKILLET, MODELS GMTS-30, GMTS-40, GMTS-60

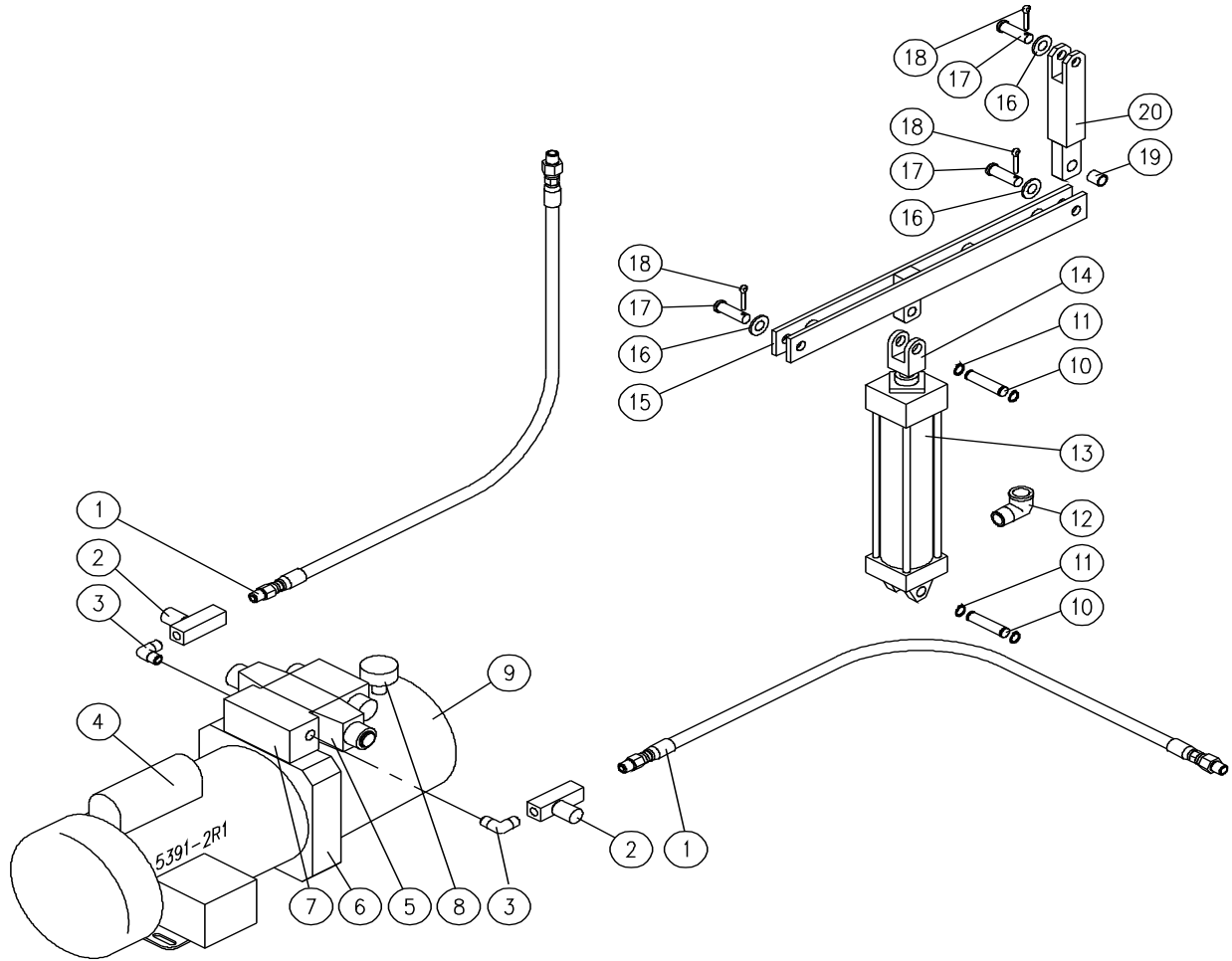
<u>ITEM</u>	<u>PART NO.</u>	<u>DESCRIPTION</u>	<u>QUANTITY</u>		
			<u>GMTS-30</u>	<u>GMTS-40</u>	<u>GMTS-60</u>
69.	3-696A	Elbow, 3/8 C x 1/8 MPT	1	1	1
70.	3-1495BA	Terminal Bolt, Brass, 1/8 FPT x 1/8 FPT x 1-1/2 Lg.	1	1	1
** 71.	9-3335-56	Lighter Orifice, #56, Natural	1	1	1
	9-3335-65	Lighter Orifice, #65, L.P.	1		
	9-3335-72	Lighter Orifice, #72, L.P.		1	1
** 72.	6350-1	Lighter Tube Assembly	1		
	6351-1	Lighter Tube Assembly		1	1
73.	4127-3	Cord Set, 120V	1	1	1
74.	4139-1	Vent Cover	1	1	1
75.	5837-1	Swivel Spacer	1	1	1
76.	5817-1	Arm	1	1	1
77.	9248-1	Knob	1	1	1
78.	5836-1	Swivel Base	1	1	1
79.	F01S-14	Washer, 1/4 SS	1	1	1
80.	9031-5	Acorn Nut, 1/4-20 UNC	1	1	1
81.	5878-2	Pan Bracket Assy. Left Hand	1	1	1
82.	5878-1	Pan Bracket Assy. Right Hand	1	1	1
83.	S01X-12	Split Lock Washer, 1/2	2	2	2
84.	M68P-1213-1	Hex Socket HD Screw, 1/2-13 NC x 1	2	2	2
85.	S01X-38	Split Lock Washer	4	4	4
86.	5379-1	Adjustable Flanged Leg	4	4	4
87.	9029-5	Hex Nut, 1/2-13 UNC	4	4	4
** 88.	5651-1	Hinge Support Assy.	2	2	
	5651-2	Hinge Support Assy.			2

* NOT SHOWN.

** SELECT AS REQUIRED.

PARTS LIST, GAS TILTING SKILLET, MODELS GMTS-30, GMTS-40, GMTS-60

FIGURE 2



PARTS LIST, GAS TILTING SKILLET, MODELS GMTS-30, GMTS-40, GMTS-60

FIGURE 2

<u>ITEM</u>	<u>PART NO.</u>	<u>DESCRIPTION</u>	<u>QUANTITY</u>			
			<u>GMTS-30</u>	<u>GMTS-40</u>	<u>GMTS-60</u>	
	1.	4511-1	Hose Assembly	2	2	2
*	1A	9420-1	Straight Fitting MORB-FB	2	2	2
	2.	9418-1	Flow Control Valve	2	2	2
	3.	9419-1	Elbow, 90° MJ-MORB	2	2	2
*	3A	9421-1	Straight Fitting MORB-FJS	2	2	2
	4.	9414-1	Motor, 120/220/240V	1	1	1
*		4515-1	Fan Blade	1	1	1
**	5.	9119-1	Directional Valve, 110/120 VAC, 50/60 Hz	1	1	1
		9119-2	Directional Valve, 220/240 VAC, 50/60 Hz	1	1	1
* **		9118-1	Coil, 120V	2	2	2
*		9118-2	Coil, 220/240V	2	2	2
	6.	9-3032	Pump c/w Integral Relief Valve	1	1	1
	7.	9417-1	Manifold	1	1	1
	8.	9416-1	Breather Cap	1	1	1
	9.	9415-1	Tank	1	1	1
	10.	4062-1	Yoke Pin	2	2	2
	11.	1-R350	External Retaining Ring	4	4	4
	12.	4109-1	Street Elbow	1	1	1
	13.	4112-1	Hydraulic Cylinder	1	1	1
*		9-3318	Cylinder Kit	1	1	1
	14.	9-3035	Rod Clevis	1	1	1
	15.	7849-1	Main Lift Arm	1	1	1

PARTS LIST, GAS TILTING SKILLET, MODELS GMTS-30, GMTS-40, GMTS-60

<u>ITEM</u>	<u>PART NO.</u>	<u>DESCRIPTION</u>	<u>QUANTITY</u>		
16.	F01X-12	Flat Washer Series "R" \varnothing 1/2	3	3	3
17.	9-3039	Clevis Pin	3	3	3
18.	5329-4	Cotter Pin \varnothing 1/8 x 1 Lg.	3	3	3
19.	9263-0810	Self Lubricating Bushing	1	1	1
20.	2567-1	Link Arm	1	1	1
* 21.		Flame Retardant, Hydraulic Oil, AWM 32 or Equivalent, 4.54 L			

* NOT SHOWN.

** SELECT AS REQUIRED.