



Profit from the Eagle Advantage®

Specification Sheet

Short Form Specifications

Eagle Clean Dishtables, model _____. Top to be 16/430, 16/304, or 14/304 stainless steel, with all seams welded, ground smooth, and polished. Front and ends to have 3"-high upturn with 1½"-diameter rolled edge. Galvanized hat channels welded to underside. Backsplash is 8"-high. 20½" standard opening for dishwasher. Legs to be 1½" O.D. galvanized tubing, 1" diameter crossbracing and adjustable bullet feet (14/304 models come standard with stainless steel hat channels welded to underside of table, stainless steel crossbraced legs, and adjustable metal feet).



left-hand model shown
(dishwasher not included)

Options / Accessories *

- Undershelf
- Stainless steel legs
- Stainless steel gussets
- Stainless steel feet

* See Spec Sheet #EG50.07 for full line of options and accessories.

EAGLE GROUP
100 Industrial Boulevard, Clayton, DE 19938-8903 USA
Phone: 302-653-3000 • Fax: 302-653-2065
www.eaglegrp.com

Foodservice Division: Phone 800-441-8440
MHC/Retail Display Divisions: Phone 800-637-5100

For custom configuration or fabrication needs, contact our **SpecFAB® Division**.
Phone: 302-653-3000 • Fax: 302-653-2065 • e-mail: quotes@eaglegrp.com

Spec sheets available for viewing, printing or downloading from our online literature library at www.eaglegrp.com

Eagle Foodservice Equipment, Eagle MHC, SpecFAB®, and Retail Display are divisions of Eagle Group. ©2017 by the Eagle Group

Item No.:	_____
Project No.:	_____
S.I.S. No.:	_____

Clean Dishtables— Corner Design

MODELS:

- | | | |
|--|--|---|
| <input type="checkbox"/> CDTCL-48-16/4 | <input type="checkbox"/> CDTCL-72-14/3 | <input type="checkbox"/> CDTCR-96-16/3 |
| <input type="checkbox"/> CDTCL-48-16/3 | <input type="checkbox"/> CDTCR-72-16/4 | <input type="checkbox"/> CDTCR-96-14/3 |
| <input type="checkbox"/> CDTCL-48-14/3 | <input type="checkbox"/> CDTCR-72-16/3 | <input type="checkbox"/> CDTCL-108-16/4 |
| <input type="checkbox"/> CDTCR-48-16/4 | <input type="checkbox"/> CDTCR-72-14/3 | <input type="checkbox"/> CDTCL-108-16/3 |
| <input type="checkbox"/> CDTCR-48-16/3 | <input type="checkbox"/> CDTCL-84-16/4 | <input type="checkbox"/> CDTCL-108-14/3 |
| <input type="checkbox"/> CDTCR-48-14/3 | <input type="checkbox"/> CDTCL-84-16/3 | <input type="checkbox"/> CDTCR-108-16/4 |
| <input type="checkbox"/> CDTCL-60-16/4 | <input type="checkbox"/> CDTCL-84-14/3 | <input type="checkbox"/> CDTCR-108-16/3 |
| <input type="checkbox"/> CDTCL-60-16/3 | <input type="checkbox"/> CDTCR-84-16/4 | <input type="checkbox"/> CDTCR-108-14/3 |
| <input type="checkbox"/> CDTCL-60-14/3 | <input type="checkbox"/> CDTCR-84-16/3 | <input type="checkbox"/> CDTCL-120-16/4 |
| <input type="checkbox"/> CDTCR-60-16/4 | <input type="checkbox"/> CDTCR-84-14/3 | <input type="checkbox"/> CDTCL-120-16/3 |
| <input type="checkbox"/> CDTCR-60-16/3 | <input type="checkbox"/> CDTCL-96-16/4 | <input type="checkbox"/> CDTCL-120-14/3 |
| <input type="checkbox"/> CDTCR-60-14/3 | <input type="checkbox"/> CDTCL-96-16/3 | <input type="checkbox"/> CDTCR-120-16/4 |
| <input type="checkbox"/> CDTCL-72-16/4 | <input type="checkbox"/> CDTCL-96-14/3 | <input type="checkbox"/> CDTCR-120-16/3 |
| <input type="checkbox"/> CDTCL-72-16/3 | <input type="checkbox"/> CDTCR-96-16/4 | <input type="checkbox"/> CDTCR-120-14/3 |

Design and Construction Features

- 14 or 16 gauge stainless steel.
- Polished stainless steel work surface.
- 30" (762mm)-wide table with choice of lengths ranging from 48" to 120" (1219 to 3048mm).
- Left or right operation.
- 1½" (41mm)-diameter galvanized legs with welded 1" (25mm)-diameter crossbracing.
- 8" (203mm)-high backsplash.
- Formed-down lip to fit most standard dishwashers.
- Adjustable non-marking bullet feet with up to 1" (25mm) adjustment.
- All Spec-Master® 14 gauge type 304 dishtables come standard with stainless steel crossbraced legs and gussets, complete with metal feet.

Certifications / Approvals

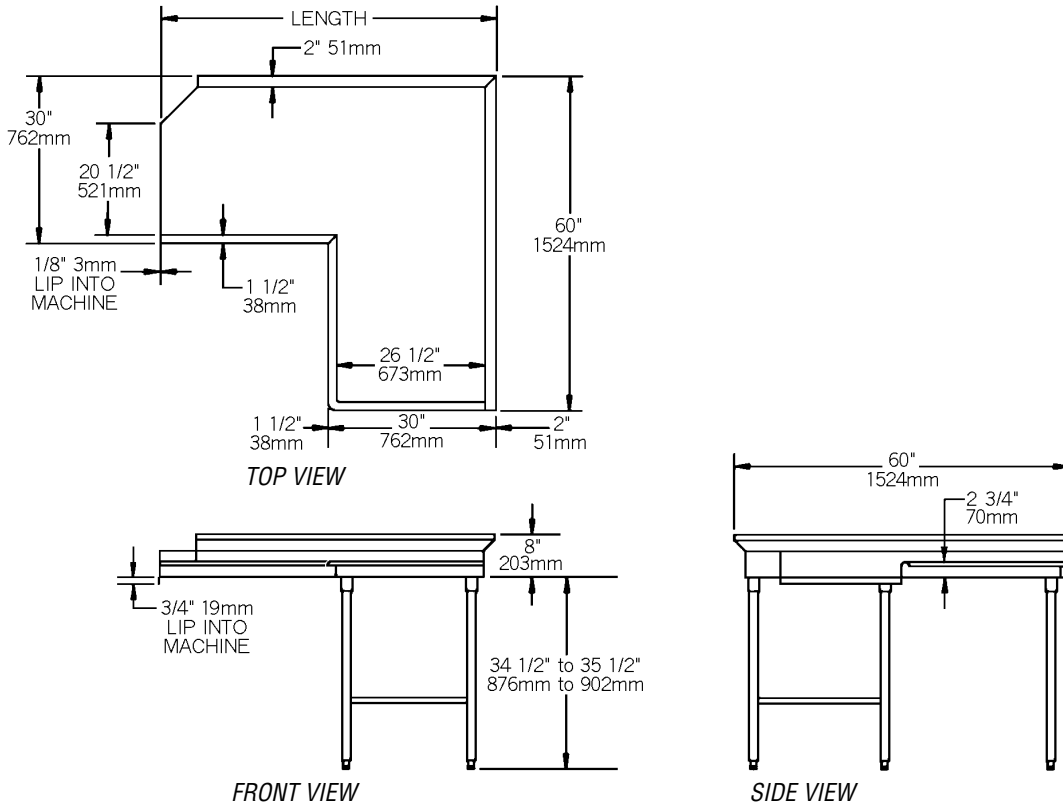




Profit from the Eagle Advantage®

Item No.: _____
 Project No.: _____
 S.I.S. No.: _____

Clean Dishtables—Corner Design



Spec-Master®				length		weight	
16 gauge type 430 model #	16 gauge type 304 model #	14 gauge type 304 model #	description	in.	mm	lbs.	kg
CDTCL-48-16/4	CDTCL-48-16/3	CDTCL-48-14/3	left-hand model	48"	1219	120	54.4
CDTCR-48-16/4	CDTCR-48-16/3	CDTCR-48-14/3	right-hand model	48"	1219	120	54.4
CDTCL-60-16/4	CDTCL-60-16/3	CDTCL-60-14/3	left-hand model	60"	1524	130	59.0
CDTCR-60-16/4	CDTCR-60-16/3	CDTCR-60-14/3	right-hand model	60"	1524	130	59.0
CDTCL-72-16/4	CDTCL-72-16/3	CDTCL-72-14/3	left-hand model	72"	1829	140	63.5
CDTCR-72-16/4	CDTCR-72-16/3	CDTCR-72-14/3	right-hand model	72"	1829	140	63.5
CDTCL-84-16/4	CDTCL-84-16/3	CDTCL-84-14/3	left-hand model	84"	2134	150	68.0
CDTCR-84-16/4	CDTCR-84-16/3	CDTCR-84-14/3	right-hand model	84"	2134	150	68.0
CDTCL-96-16/4	CDTCL-96-16/3	CDTCL-96-14/3	left-hand model	96"	2438	160	72.6
CDTCR-96-16/4	CDTCR-96-16/3	CDTCR-96-14/3	right-hand model	96"	2438	160	72.6
CDTCL-108-16/4	CDTCL-108-16/3	CDTCL-108-14/3	left-hand model	108"	2743	170	77.1
CDTCR-108-16/4	CDTCR-108-16/3	CDTCR-108-14/3	right-hand model	108"	2743	170	77.1
CDTCL-120-16/4	CDTCL-120-16/3	CDTCL-120-14/3	left-hand model	120"	3048	180	81.6
CDTCR-120-16/4	CDTCR-120-16/3	CDTCR-120-14/3	right-hand model	120"	3048	180	81.6

EAGLE GROUP
 100 Industrial Boulevard, Clayton, DE 19938-8903 USA
 Phone: 302-653-3000 • Fax: 302-653-2065
 www.eaglegrp.com

Foodservice Division: Phone 800-441-8440
 MHC/Retail Display Divisions: Phone 800-637-5100

Printed in U.S.A.
 ©2017 by Eagle Group

Rev. 11/17

Spec sheets available for viewing, printing or downloading from our online literature library at www.eaglegrp.com

Although every attempt has been made to ensure the accuracy of the information provided, we cannot be held responsible for typographical or printing errors. Information and specifications are subject to change without notice. Please confirm at time of order.