







SW48

Pot & Pan Washer

-  12 racks per hour | 48 pans per rack
-  Fully automatic operation with power on/off button
-  Hold down rack system for secure washing
-  Timed wash and rinse cycles

STANDARD FEATURES

- Wash tank heat: electric, gas, steam injection or steam coil
- Pressure regulator
- Single point electrical connection
- Low water cut-off
- Automatic fill
- Three position wash selector (Complete cycle times): Light (260 seconds), Medium (380 seconds), Heavy (500 seconds)
- Emergency cycle stop button
- Wash pump pressure gauge
- Rinse pressure gauge
- Digital temperature controller for wash and rinse
- Pan washer clean-up hose and spray gun
- Secondary system
- Detergent connection provision
- Pit or floor model
- Pressure regulator to maintain 20 psi rinse flow
- SureFire® Start-Up & Check-Out Service

OPTIONS

- Stainless steel steam coil tank heat
- Rack assortment: general utility, bake sheet, utensil basket
- Steam booster
- Electric booster
- Security package
- Totally enclosed motor
- Recommended option: power vent fan



SPECIFICATIONS

Capacity	Racks Per Hour	12
	Sheet Pans Per Hour	579
Heating & Venting	Wash Tank Heat	9 kW + 4.5 kW Element
	Rinse Booster Heat	9 kW
	Exhaust Hood Requirement	8" Steam Exhaust Vent
	Water Inlet Temperature	110°F
Water	Water Consumption (20 PSI)	168 gal/hr
	Wash Tank Capacity	65 gal
	Peak Drain Flow	11 gal/min
	Steam Tank Consumption (Injected, 10-15 PSI)	37 lbs/hr
Steam	Steam Tank Consumption (Coil, 10-15 PSI)	76 lbs/hr
	BTUH Capacity	66,000
Gas	Natural Gas Consumption (7" W.C. Minute)	65 CFH
	Propane Consumption (11" W.C. Minute)	26 CFH
	Wash Motor HP	15
Other	Shipping Weight	2440 lbs

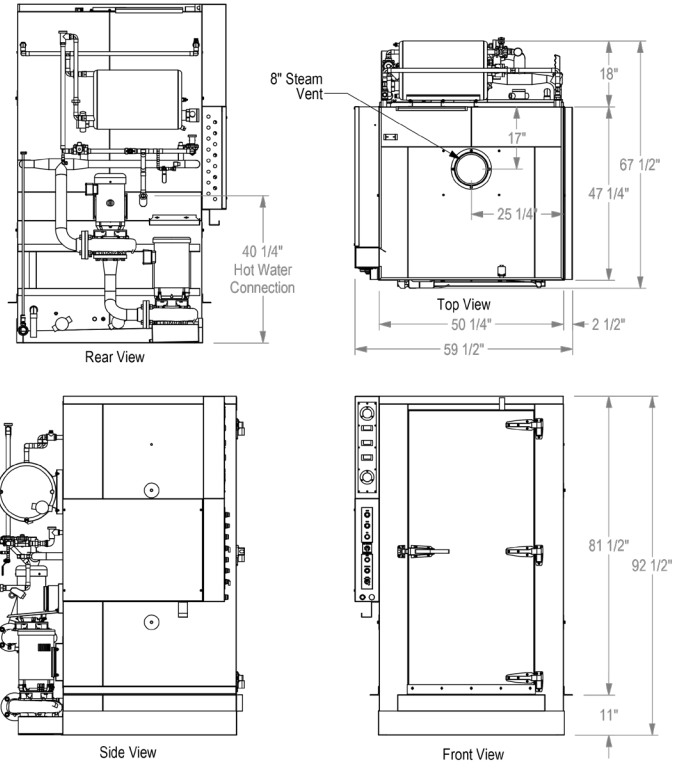
ELECTRICAL

		Electric	Steam	Gas
Electrical Options	208/60/3	142 amps	42.1 amps	92.1 amps
	230/60/3	128 amps	38.2 amps	83.4 amps
	460/60/3	65.4 amps	20.2 amps	42.8 amps

PROJECT BUILD FORM

Project Name	
Project Manager	
Configuration	Electric <input type="checkbox"/>
	Steam <input type="checkbox"/>
	Gas <input type="checkbox"/>
Electrical	208/60/3 <input type="checkbox"/>
	230/60/3 <input type="checkbox"/>
	460/60/3 <input type="checkbox"/>
Approval (Please Check One)	Approved <input type="checkbox"/>
	Approved as Noted <input type="checkbox"/>
	Rejected <input type="checkbox"/>
Signature	Date
Internal Info	Serial Number
	Configuration Code

TECHNICAL DRAWING



Contact Insinger Sales at 800-344-4802 for an installation drawing specific to your application.
 Note: Due to product improvement we reserve the right to change information and specifications without notice.