

# INSTRUCTION MANUAL

**INDUSTRIAL BLENDER - T115-81.571.00936-A**

**\* Please read these instructions carefully before operation this appliance.**

## IMPORTANT SAFEGUARDS

When using electrical appliances, basics safety precautions should always be observed including the following:

- Before connecting your blender check if voltage of your power system corresponds to the same specified on the appliance.
- To protect against risk of electrical shock, do not put cord, plug, base or motor in water or other liquids.
- Never connect two or more appliances in the same plug.
- When not in use, unplug the blender.
- Avoid starting blender empty.
- Avoid contact with moving parts because blades are sharp. Handle carefully.
- Keep hands and utensils out of container while blending to prevent the possibility of severe personal injury and or damage to blender. A plastic spatula may be used but only when blender is "NOT RUNNING".
- Only tilt the container when blender "COMPLETELY STOPPED".

## INSTRUCTIONS FOR USE

- Blender control is made by switch ( ON - OFF)
- It is recommended to cut food in small pieces and maintain food below frieze height to avoid spilling.
- To start blender place small quantity of food before connecting it, and afterwards complete container.
- When blender is running do not remove the lid.
- If blender action stops, turn blender off. Remove lid and use a plastic spatula to push mixture toward blades. Replace lid and continue.

## CLEANING PROCEDURE

- Clean container (cup) with liquid soap and water filling to half capacity.
- Turn on blender for some seconds.
- Turn off blender, empty the container and rinse it.
- Unplug blender clean body and external cup with a wet cloth.
- Do not use harsh detergent or chemical products for cleaning.
- Never use water jet or immerse appliance in water.
- Wipe off appliance switch a dry cloth and wait at least half an hour before re-connecting to the main power outlet.

The pictures/drawings are illustrations. All data can be changed without notification.



# T115



**AMERICA PARTS & TOOLS, INC**  
3705 NW, 115th Ave Unit 8  
Doral, FL 33178  
PH: +1-786-5369960  
email: [info@americapartstools.com](mailto:info@americapartstools.com)

T115-81.571.00936-A



- **DO NOT turn on the unit empty or dry**

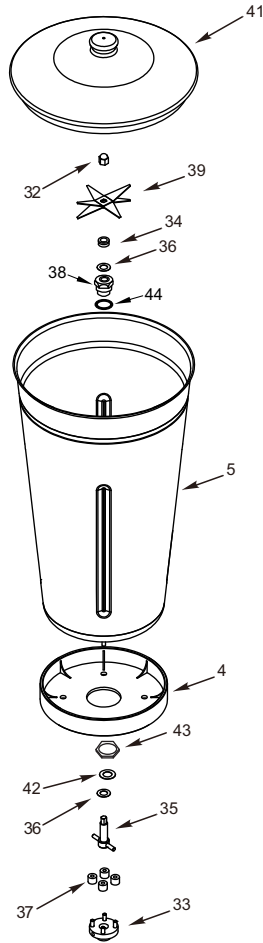
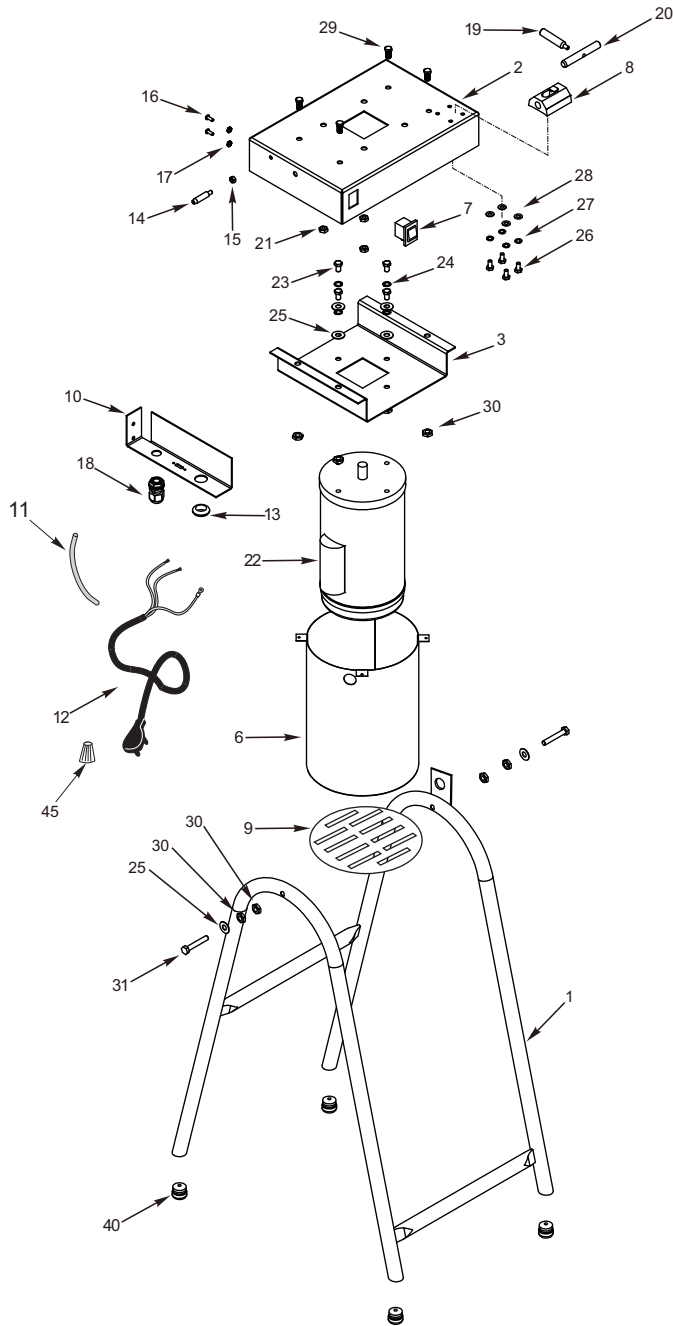
IMPORTANT NEVER SWITCH THE MACHINE ON WITHOUT LOAD IN IT BECAUSE IT WILL CAUSE IRREPARABLE DAMAGES.

IMPORTANT It is not recommended to blend products without the addition of any liquid, otherwise it will overheat and damage the Cup seal.

- **DO NOT fill with hot products over 122°F or 50°C.**  
**hot liquids may cause damage in the seals and liking**
- **DO NOT fullfill with ICE, this is not an ice crushed**
- **DO NOT process COCONUT Chunks, may cause axis damages**
- **Before cleaning process, unplug the machine form the electrical outlet.**



# INDUSTRIAL BLENDER 15 LITERS (TI 15)



# INDUSTRIAL BLENDER 15 LITERS (TI 15)

item	code	description
1	17.559-3	Blender Support
2	17.562-3	Base
3	17.561-3	Motor Support
4	16.683-3	Container's Base
5	16.696-3	Container
6	17.555-3	Motor Cover
7	260	Switch
8	40.049-3	Latch Support
9	17.552-3	Motor Cover Bottom
10	17.560-3	Wiring Cover
11	37.017-3	Protection Sleeve
12	2.082-3	Power Cord
13	2.007-3	Rubber Protector
14	5.207-3	Pin
15	601	Nut
16	384	Screw
17	604	Nut
18	9.433-3	Cord Retainer
19	37.919-3	Latch Din
20	37.920-3	Latch Body
21	635	Nut
22	37.226-3	Motor
23	334	Screw
24	598	Press Washer
25	641	Washer
26	332	Screw
27	597	Press Washer
28	642	Washer
29	37.161-3	Screw
30	638	Nut
31	17.650-3	Screw
32	37.033-3	Nut
33	20.893-3	Shaft Adapter
34	37.063-3	Retainer
35	37.079-3	Shaft
36	37.511-3	Underfriction Washer
37	21.940-3	Rubber Ring
38	37.154-3	Bushing
39	18.813-3	Knife
40	37.015-3	Foot
41	37.019-3	Lid
42	18.983-3	Washer
43	37.058-3	Chuck Nut
44	37.062-3	O' Ring
45	2.190-3	Wiring Conector

## Technical Data

TI15-81.571.00936-A	
Voltage (V)	127(60 Hz)
Power (HP)	1 1/2
Amperage (A)	18.0
Speed (rpm)	3500
Capacity (l)	15
Weight (Kg/lbs)	24 / 52.8
Dimension WxHxD (cm/in)	46/18.2 x 119/46.9 x 57/22.5